

INCREDIBLE MOUNTAIN VIEWS

Idaho Mountain Real Estate Team

2930 Schlehuber Rd, Cambridge, ID

Nice manufactured home with a great split bedroom layout. Inside is uniquely and beautifully trimmed in wood. The seller has added personal touches throughout. Full length covered deck on the back side of the home and a great smaller deck on the front side with one of a kind beautiful juniper posts. Magnificent mountain views, approximately 3 irrigated acres, room for a few animals. Great 2 car garage with an insulated heated shop in the back.



360 degree views are amazing.

Property Details \$240,000

- 12.12 Acres
- Fully fenced
- Just a few minutes from Cambridge
- Topography is rolling to flat
- Cambridge Ditch Irrigation



Commanding Mountain Views

Property Summary

- Great garden area
- County maintained road
- Minutes from Mundo Hot Springs
- Watch your animals from the awesome front porch





Location

Located in the [Cambridge School District](#)

[Cambridge](#) elevation is 2661 feet above sea level. Four seasons with a great garden growing season

Approx 40 minutes to Brownlee Reservoir

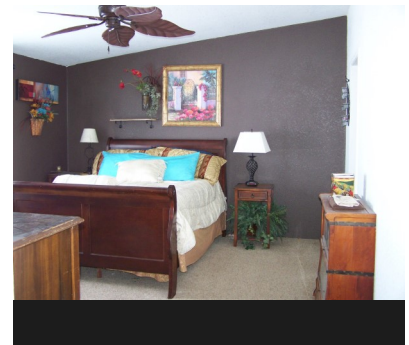
40 minutes to Weiser

Only about a 1 1/2 hour drive to the State's Capitol, Boise.

Small town friendly atmosphere

Cambridge has a population of about 316.

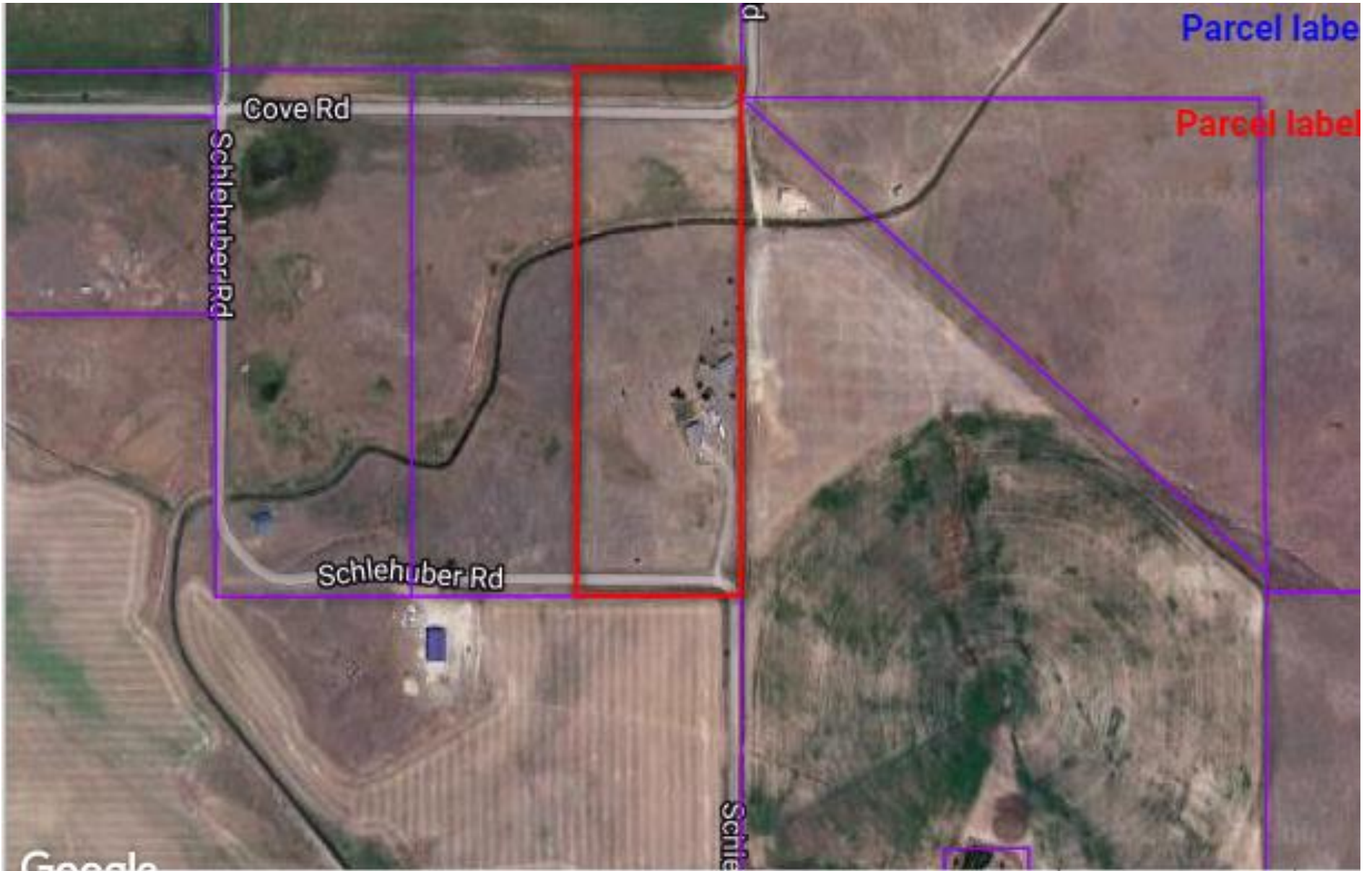
The Gateway to Hells Canyon.



Offered by:

Wendy Ogden
208-741-1375

2930 Schlehuber Rd, Cambridge, ID 12.12 AC



Google
THIS MAP IS FOR INFORMATIONAL PURPOSES ONLY. LINES SHOWN ARE APPROXIMATE AND ARE NOT TO BE USED TO DETERMINE PROPERTY BOUNDARIES.

This map is for visual use only. The accuracy is not guaranteed by the agent.